



ACCESSORY

3.5mm Audio/Music Streaming Bluetooth Adaptor

## QUICK START GUIDE

iO-BTA3-5

First Pairing .....	3
Get Connected.....	4
Charging the Adaptor .....	5
The Adaptor .....	6
The Charger .....	6
Get Disconnected.....	7
Specification .....	7
Frequently Asked Questions .....	8
Warranty Information.....	9
Notes.....	10
Product Registration .....	12

This section will show you how to connect your portable audio device to your Bluetooth receiver (e.g iO Bluetooth car kit).

**STEP 1**

Ensure your portable device is charged.

**STEP 2**

Insert the Adaptor into the 3.5mm stereo headphone socket of your device.

**STEP 3 (PAIRING)**

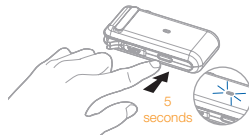
Pairing and connecting with an iO Bluetooth Music streaming product (e.g iO PLAY, iO TALK1, iO TALK2, iO TALK3).

**A.** Make sure your device and Bluetooth Adaptor is within a 3m range of the iO Music Streaming product (i.e. iO PLAY).

**Note:** If this is the first time connecting the Bluetooth adaptor make sure all other bluetooth devices are turned off and make sure no other device is connected to the iO Bluetooth Car kit.



**B.** Ensure the adaptor is switched off (See **GET DISCONNECTED**), Then press and hold the "ON/OFF" button until the blue LED indicator flickers repeatedly. This enters pairing mode.



**C.** When the pairing is complete you will hear your device music/audio being played from your iO Bluetooth music streaming device (i.e iO PLAY). Meanwhile, the Blue LED indicator will flash regularly and slowly.

**D.** If you want to pause music or adjust volume, simply press the relevant buttons on your device.

**NOTE:** In case the pairing procedure fails, please unplug the Adaptor wait for a few seconds and repeat **STEP 2**.

**NOTE:** Once the first Pairing/Connection has been completed successfully, the next time you want to connect the iO Bluetooth Adaptor, follow the **GET CONNECTED** section.

This section will show you how to connect your portable audio device to your Bluetooth receiver (e.g iO Bluetooth car kit) after the **FIRST PAIRING** has been completed.

## STEP 1

Ensure your portable device is charged.



## STEP 2

Insert the Adaptor into the 3.5mm stereo headphone socket of your device.



## STEP 3 (PAIRING)

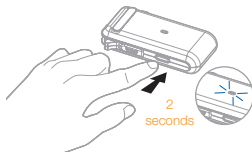
Pairing and connecting with an iO Bluetooth Music streaming product (e.g iO PLAY, iO TALK1, iO TALK2, iO TALK3).

A. Make sure your device and Bluetooth Adaptor is within a 3m range of the iO Music Streaming product (i.e. iO PLAY).

Note: If this is the first time connecting the Bluetooth adaptor make sure you have complete the **FIRST PAIRING** step.



B. Ensure the adaptor is switched off (See **GET DISCONNECTED**), Then press and hold the "ON/OFF" button for 2 seconds until the blue LED indicator flickers slowly.



C. When the pairing is complete you will hear your device music/audio being played from your iO Bluetooth music streaming device (i.e iO PLAY). Meanwhile, the Blue LED indicator will flash regularly and slowly.

D. If you want to pause music or adjust volume, simply press the relevant buttons on your device.

**NOTE:** In case the connecting procedure fails, please unplug the Adaptor wait for a few seconds and repeat the **FIRST PAIRING** section.

This Bluetooth Adaptor is battery powered and you will need to re-charge the adaptor from time to time. A cigar lighter car charger comes with the adaptor. You can charge the adaptor whilst you are streaming your music wirelessly into an iO Bluetooth music streaming car kit (e.g iO Play).

To charge your Bluetooth adaptor follow the following steps:

## STEP 1

Ensure you have your ignition turned on.

## STEP 2

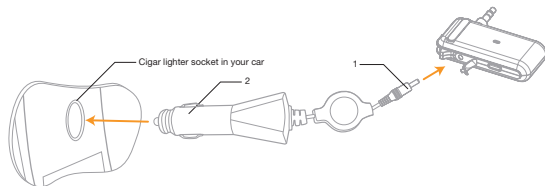
Insert the charger plug (1) into the base of the Bluetooth adaptor.

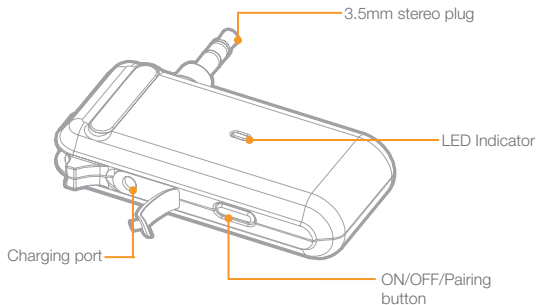
## STEP 2

Insert the Cigar lighter plug (2) into the vehicle's cigar lighter socket. Your device will now start charging.

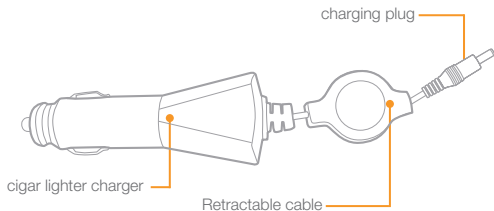
## NOTE:

1. The Red light stays on while the adaptor is charging.
2. The Red light will turn off when the charging is complete.
3. You can still pair/connect & play audio from your device whilst charging the adaptor but the red charging LED indication will change.



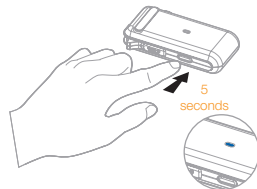


## THE CHARGER



### STEP 1

Switch off the adaptor by pressing and holding the "ON/OFF" button until the LED continually illuminates, then release the ON/OFF button. (The LED should not flash thereafter, ensuring the adaptor is switched off)



### STEP 2

Disconnect the adaptor from the 3.5mm /line out socket of the device.

## SPECIFICATION

### ADAPTOR SPECIFICATION

Bluetooth Specification:	V 1.2
Bluetooth profiles:	A2DP
Output Power Class:	Class 2
Security:	Pairing Code: 0000
Transmit Power Consumption:	35mA
Input Power:	3.7v, 230mAh

### CHARGER SPECIFICATION

Input:	12~24v DC
Output:	5v DC OUTPUT 500mA

### Q. MY BLUETOOTH ADAPTOR WILL NOT PAIR/CONNECT WITH iO BLUETOOTH CAR KITS?

- A. Ensure the ignition is turned on.  
 A. Ensure no other device is connected to the iO Bluetooth Car kit device. When you press the ON/OFF button on the adaptor, ensure the iO Bluetooth Adaptor LED is flashing quickly. This tells you it is in pairing mode.

### Q. I DO NOT HEAR ANY MUSIC FROM THE BLUETOOTH RECEIVER?

- A. When using iO PLAY, make sure the Bluetooth Adaptor has connected to iO PLAY. The Skip forward and skip back lights will be illuminated when connected. To reconnect follow the “*GET CONNECTED*” section.  
 A. Make sure the volume on the Bluetooth Receiver is turned up.

### Q. I HAVE STREAMED MUSIC FROM MY A2DP MUSIC MOBILE PHONE, NOW I CANNOT RECONNECT MY BLUETOOTH ADAPTOR?

- A. Turn off the Bluetooth on your Bluetooth Mobile phone. Then re-connect the Bluetooth Adaptor to the iO Bluetooth car kit following the “*GET CONNECTED*” section in this Quick Start Guide. Once the Bluetooth Adaptor is connected you may enable the Bluetooth on your mobile phone and re-connect your phone.

#### WARRANTY

Armour Automotive warrants this product to be free from defects in material and workmanship under normal use for a period of 12 months from the date of original purchase with receipt. Should service be necessary under this warranty for any reason due to manufacturing defect or malfunction during the warranty period, Armour Automotive will repair or replace (at its discretion) the defective merchandise with equivalent products. The warranty excludes damage or abuse caused by customer misuse. All warranties are to be handled by the original retailer where the goods were purchased.

This warranty is valid only for the original purchaser and is not extended to owners of the product subsequent to the original purchaser. Any applicable implied warranties are limited in duration to a period of the express warranty as provided herein beginning with the date of the original purchase at retail, and no warranties, whether express or implied, shall apply to this product thereafter.

#### LIABILITY

iO shall not, under any circumstances, be liable for damage caused as a result of misuse suffered by the user when using this product with an nomadic device.

#### TRADEMARK

All rights reserved. The iO trademarks are the sole and exclusive property of Armour Automotive. Any other trademarks or names used in iO documentation are copyright protected and are the sole and exclusive property of their respective owners.

#### Declaration of Conformity

We Armour Automotive, declare under our sole responsibility that this iO product complies with the essential requirements for CE Marking when used in a residential, commercial, vehicular or light industrial environment.

#### COPYRIGHT

Copyright 2008; Armour Automotive. All rights reserved. The total or even partial reproduction, transmission or storage of this guide in any form or by any process whatsoever (electronic, mechanical, photocopy, recording or otherwise) is strictly prohibited without prior consent from Armour Automotive.

#### MODIFICATIONS

The explanations and specifications in this guide are given for information purposes only and may be modified without prior notice. They are deemed to be correct at the time of going to press. The utmost care has been taken when writing this guide, as part of the aim to provide you with accurate information. However, Armour Automotive shall not be held responsible for any consequences arising from any errors or omissions in the guide. Armour Automotive reserves the right to amend or improve the product design or user guide without any restrictions and without any obligation to notify users. As part of our ongoing concern to improve our products, the product that you have purchased may differ slightly from the model described in this guide. If so, a later version of this guide might be available in electronic format at [www.my-io.com](http://www.my-io.com).

#### CORRECT DISPOSAL OF THIS PRODUCT (Waste Electrical Electronic Equipment)

This marking shown on the product or its literature, indicates that it should not be disposed with other household wastes at the end of its working life. To prevent possible harm to the environment or human health from uncontrolled waste disposal, please separate this from other types of wastes and recycle it responsibly to promote the sustainable reuse of material resources. Household users should contact either the retailer where they purchased this product, or their local government office. Business users should contract their supplier and the terms and conditions of the purchase contract. This product should not be mixed with other commercial wastes for disposals.



# PRODUCT REGISTRATION

RECEIVE GREATER BENEFITS BY REGISTERING YOUR iO PRODUCT IN FIVE EASY STEPS.

## BENEFITS:

- Access to online product support.
- Warranty and after sales service.
- Exclusive online login to [www.my-io.com](http://www.my-io.com).

## STEP 1

Visit [www.my-io.com/register](http://www.my-io.com/register)

## STEP 2

Log-in or Register your details.

## STEP 3

Enter the product details shown below on your registration label and follow the registration steps.

**DESC:** 3.5mm Stereo Bluetooth  
Adaptor

**P/N:** iO-BTA3-5

## STEP 4

Registration is now complete.

## STEP 5

Enjoy your iO Experience with total peace of mind.